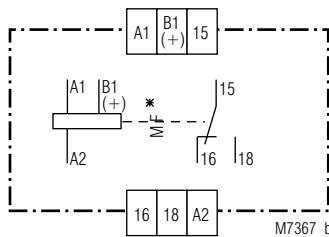


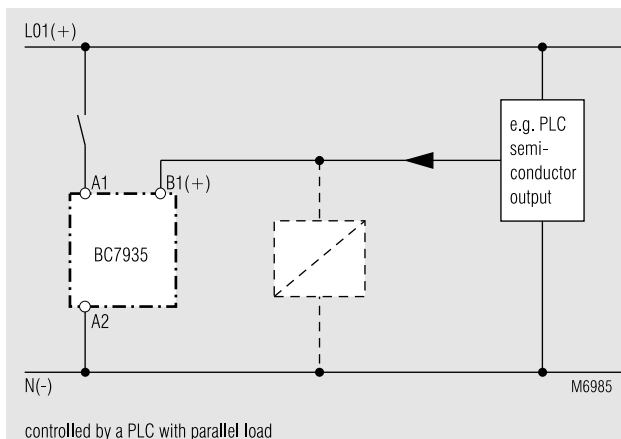
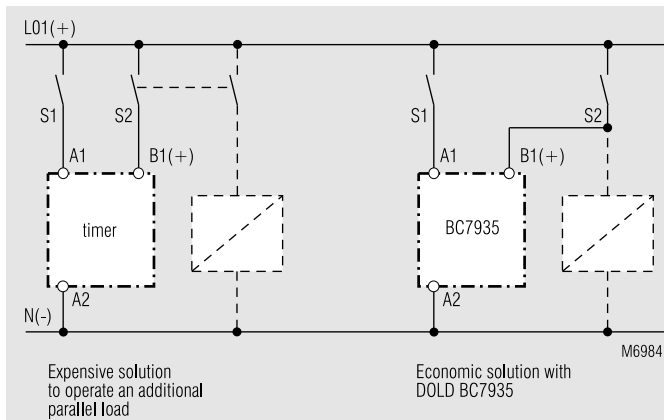
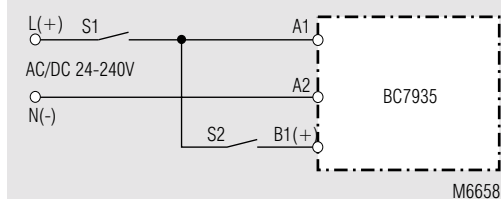
0225499

- According to IEC/EN 61 812-1
- 8 functions selectable by rotational switch:
 - AV - operate delay
 - EW - fleeting on make
 - IE - delayed pulse function
 - BE - flasher start with impulse
 - RV - release delay
 - IF - pulse forming
 - AW - fleeting on break
 - AV/RV - operate / release delay
- With 10 time ranges up to 300 h selectable by rotational switch
- Time addition via control input B1 for the functions AV, EW, IE, BE
- Time ranges up to 300 h
- AC/DC 24 ... 240 V
- 1 changeover contact
- LED indicators for voltage supply and contact position, flashing function during elapse of time
- BC 7935N, Wire connection: also 2 x 1,5 mm² stranded ferruled (isolated), DIN 46 228-1/-2/-3/-4 or 2 x 2,5 mm² stranded ferruled DIN 46 228-1/-2/-3
- Width 22,5 mm

Circuit diagrams



Connection examples



Approvals and marking



Applications

Time-dependent controllers

Indicators

green LED: on, when supply connected.
 yellow LED: on, when output relay active.
 Flashes during time delay, pulse-pause-ratio indicates the state of the output relay (see Function diagramm).

Notes

The functions RV, IF, AW, AV/RV have to be controlled by input B1(+) according to the connection diagram.
 At the functions AV,EW,IE, BE the timing cycle can be stopped by closing S2 (see diagram). When opening S2 the timing cycles continues.

Technical data

Time circuit

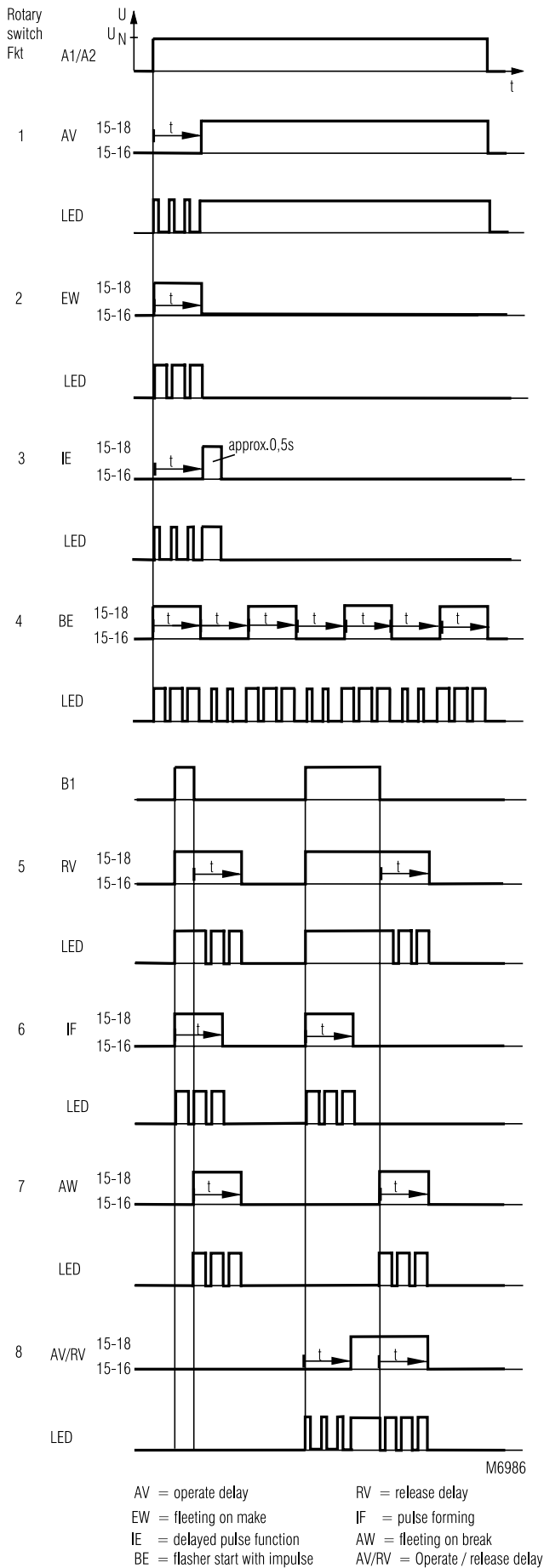
Time ranges:	0,05 ... 1 s	1,5 ... 30 min
	0,15 ... 3 s	15 ... 300 min
	0,5 ... 10 s	1,5 ... 30 h
	1,5 ... 30 s	15 ... 300 h
	5 ... 100 s	
	15 ... 300 s	

Time setting: infinitely variable 1:20
Recovery time: 50 ms
Repeat accuracy: 2 %
Voltage influence: ≤ 1 %
Temperature influence: 0,05 % / K

Input

Nominal voltage U _N A1 / A2, B1(+) / A2:	AC/DC 24 ... 240 V, DC 12 V			
	0,8 ... 1,1 U _N			
Voltage range:	AC		DC	
	Nominal consumption:	24 V	240 V	24 V
	0,8 VA	1,4 VA	0,8 W	1,8 W
Nominal frequency:	50 / 60 Hz			
Release voltage:	AC: ≥ 15 % U _N DC: ≥ 5 % U _N			

Function diagram



Technical data

Output

Contacts

BC 7935.81, BC 7935N.81: 1 changeover contact
4 A

Thermal current I_{th} :

to AC 15: 3 A / AC 230 V IEC/EN 60 947-5-1

Switching capacity

to AC 15 at 1 A, AC 230 V: typ. 500 000 switching cycles IEC/EN 60 947-5-1

Electrical life

Short circuit strength max. fuse rating: 4 A gL IEC/EN 60 947-5-1

Mechanical life:

10⁸ switching cycles

General data

Operating mode:

Continuous operation

Temperature range:

0 ... + 60°C

Clearance and creepage distances

overvoltage category /
contamination level:

4 kV / 2 IEC 60 664-1

EMC

Electrostatic discharge:

8 kV (air) IEC/EN 61 000-4-2

HF irradiation:

10 V/m IEC/EN 61 000-4-3

Fast transients:

2 kV IEC/EN 61 000-4-4

Surge voltages

between

wires for power supply:

1 kV IEC/EN 61 000-4-5

between wire and ground:

2 kV IEC/EN 61 000-4-5

Interference suppression:

Limit value class B EN 55 011

Degree of protection:

Housing: IP 40 IEC/EN 60 529

Terminals: IP 20 IEC/EN 60 529

Housing:

Thermoplastic with V0 behaviour
to UL subject 94

Vibration resistance:

Amplitude 0,35 mm IEC/EN 60 068-2-6
frequency 10 ... 55 Hz

Climate resistance:

0 / 060 / 04 IEC/EN 60 068-1

Terminal arrangement:

DIN 46 199-5

Terminal designation:

EN 50 005

Wire connection

BC 7935:

1 x 4 mm² solid or
2 x 1,5 mm² stranded wire with sleeve
DIN 46 228-1/-2/-3/-4

BC 7935N:

1 x 4 mm² solid or
1 x 2,5 mm² stranded ferruled (isolated)
or
2 x 1,5 mm² stranded ferruled (isolated)
DIN 46 228-1/-2/-3/-4 or
2 x 2,5 mm² stranded ferruled
DIN 46 228-1/-2/-3

Wire fixing:

BC 7935:

Flat terminals with self-lifting
clamping piece IEC/EN 60 999-1

BC 7935N:

Terminal screws M 3,5

Box terminal with wire protection

Mounting:

DIN rail

IEC/EN 60 715

Weight:

105 g

Dimensions

Width x height x depth:

22,5 x 84 x 97 mm

Standard type

BC 7935N.81 AC/DC 24 ... 240 V 50/60 Hz

Article number: 0052778

- Front colour grey, with box terminals
- Output: 1 changeover contact
- Nominal voltage U_N : AC/DC 24 ... 240 V
- Width: 22,5 m

Ordering example

BC 7935 .81 AC/DC 24 ... 240 V 50 / 60 Hz

- └─ Nominal frequency
- └─ Nominal voltage
- └─ Contacts
- └─ BC 7935N: front colour grey, with box terminals
- └─ BC 7935: front colour orange, with flat terminals

