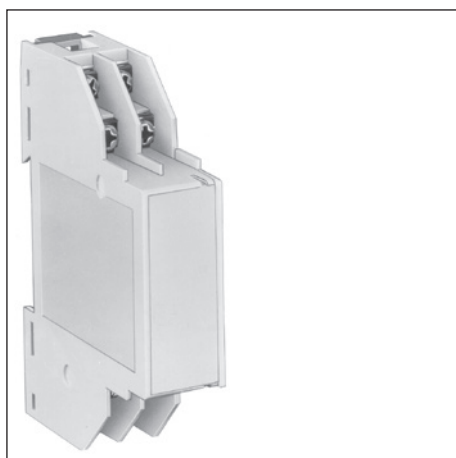
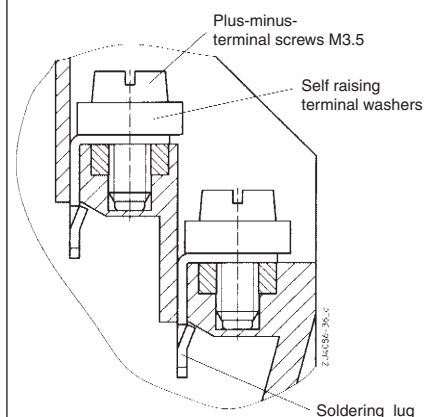


Insulated Enclosure KU 4086

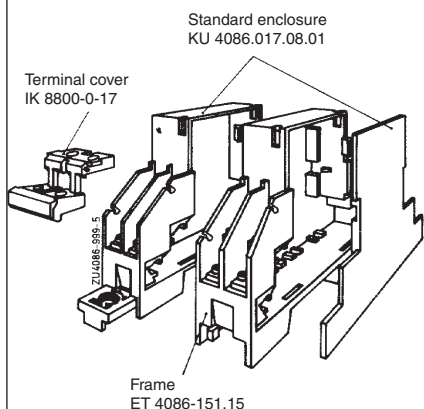
to DIN 43 880 for installation in distribution cabinets or surface mounting



- Width 17.5 mm
- Modular extensions
- 8 connection terminals with plus-minus terminal screws
- Terminal cover as option



Flat terminal for solder connection



Technical Data

Order reference:	KU 4086.017.08.01	
Outer dimensions:	17.5 x 87 x 58 mm modular extensions in steps of 17.5 mm complying with DIN 43880	
Enclosure material:	PC-GF light grey RAL 7035	
Temperature stability		
Complying with UL 746 B:	125 °C	
Complying with Vicat ISO 306	Meth. B:	148 °C
Complying with ISO 75-2	Meth. A:	138 °C
	Meth. B:	144 °C
Max. permitted power dissipation:	Approx. $n \times 3$ W at normal climate 23 / 50-1 ISO 554	
Specific thermal resistance	$R_{th} = 20$ K / W for stand-alone enclosure	
Flame retardancy		
complying with UL 94:	V-0	
Complying with IEC 60 707:	BH 2-30	
Number of terminals:	8, < 8 on request	
Terminal material:	Steel strip, tinned	
Max. cross section for connection:	Max. 2×2.5 mm ² solid 2×1.5 mm ² stranded ferruled DIN 46228-1/-2/-3/-4	
Insulation of wires length:	10 mm	
Max. current carrying capacity: KU 4086.017.08.01:	16 A	
Wire fastening:	Plus-minus-terminal screws M3.5, with self raising terminal washers. Complies with IEC 60999-1	
Torque:	Max. 0.8 Nm	
Inner connection:	Soldering lug for stranded	
Enclosure fastener:	1.) Snap-on fastener on top hat rail EN 50022 2.) Screw fixing with Doldfix K70/032.5-0-2	
Creepage current resistance:	CTI 175 $\hat{=}$ insulated material III a	IEC 60 664-1
Air gap and creepage distance:	≥ 5 mm	IEC 60 664-1
Type of protection		
Enclosure:	IP 40	
Terminals:	IP 10 (with terminal cover IP 20 and contact protection complies with VBG 4)	
Print area:	42 x 16 x n mm (n = number of modules)	
Printed circuit board:	See printed circuit board design	
Printed circuit board holder in standard enclosure:	Screw fixing 2 x M2	
in frame:	Guide ribs	
Net weight:	40 g	
Accessories:	Frame (for modular extension) with 8 Flat terminals, on request with other terminal inserts and mounting clip(s)	
ET 4086-151.15	Cylindrical screws for mounting PCB ① in standard enclosures	
ISO 1207 M2 x 3:	Terminal cover for flat terminals, complies with contact protection according to VBG 4 and DIN 57 106-100	
IK 8800-0-17:	Blanking plug	
K70/150-0-48:		

